

CERTIFICATE OF ANALYSIS

(Certificate No. KMD002005-01)

Release Date: 07/02/2026

Re-test Date: 06/02/2029

4-(1-Cyclohexyl-2-(dimethylamino)ethyl)phenol

Identification

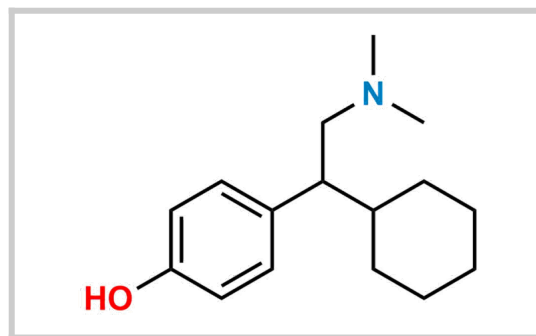
Chemical Name :
4-(1-Cyclohexyl-2-(dimethylamino)ethyl)phenol

CAT No. : KMD002005

CAS No. : 1346605-18-2

Molecular Formula : C₁₆H₂₅NO

Molecular Weight : 247.4



Analytical Information

Batch No. : D002005-114-152

Description : Light Brown Solid

HPLC Purity : 95.13 %

Weight Loss By TGA : 1.19 %

% Potency : 94 %

Solubility : Methanol

Mass : Confirm

IR : Confirm

¹H NMR : Confirm

Additional Information

Long Term Storage : Store at 2-8 deg. C for long term storage

Shipping Condition : Product is stable to be Shipped at Room Temperature

% Potency = [100 - 1.19(Weight Loss By TGA)] x [95.13(HPLC Purity)]/100 = 94 %
-¹³CNMR added on 14.03.2026

Recommendation : Released

	Department	Name	Signature	Date
Prepared By	Analytical	Jignesh Patel		16/03/2026
Reviewed & Approved By	Quality Control	Parag Vekariya		16/03/2026

Attachments : COA, HPLC, MASS, ¹HNMR, ¹³CNMR, IR and TGA