

CERTIFICATE OF ANALYSIS

(Certificate No. KMM001404-01)

Release Date: 28/12/2024

Re-test Date: 27/12/2027

Methyl Palmitoleate

Identification

Chemical Name :
Methyl palmitoleate

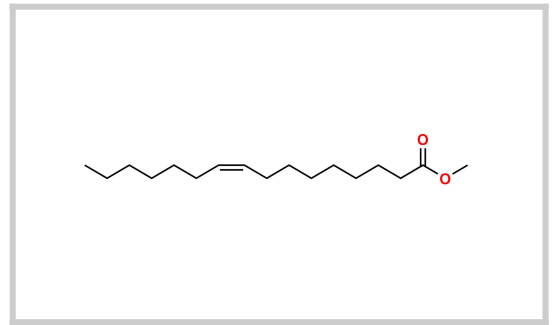
Alt. Name : Methyl (Z)-hexadec-9-enoate ; Methyl
cis-9-hexadecenoate

CAT No. : KMM001404

CAS No. : 1120-25-8

Molecular Formula : C17H32O2

Molecular Weight : 268.4



Analytical Information

Batch No. : M001404-091-038

Solubility : MDC

Description : Colorless Liquid

Mass : Confirm

GC Purity : 99.08 %

IR : Confirm

Weight Loss By KF : 0.44 %

1H NMR : Confirm

% Potency : 98.64 %

Additional Information

Long Term Storage : Store at 2-8 deg. C for long term storage

Shipping Condition : Product is stable to be shipped at room temperature

% Potency = $[100 - 0.44(\text{Weight Loss By KF})] \times [99.08(\text{GC Purity})]/100 = 98.64 \%$

Recommendation : Released

	Department	Name	Signature	Date
Prepared By	Analytical	Parag Patel		26/12/2024
Reviewed & Approved By	Quality Control	Jatin Patel		26/12/2024

Attachments : COA, GC, MASS, 1HNMR, IR and KF